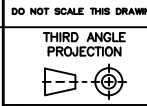


DIMENSIONS IN INCHES [millimeters]

REV	DESCRIPTION	DRAWN BY	CHKR	APVD	REV. DATE	REV	DESCRIPTION	BY	CHKR	APVD	REV. DATE
1	Added Metric and Ref. Note	RHC			10-96						
2	New Border	RHC			11-99						
3	REMOVED B/M	SDM			04-04						
4	UPDATE FORMAT	SDM			06-04						
5	ECN-2012-0035	EWB			03-12						

CONFIDENTIAL



DO NOT SCALE THIS DRAWING
 THE INFORMATION CONTAINED HEREIN IS CONFIDENTIAL. SUCH INFORMATION IS THE PROPERTY OF MEMBRANA-CLT AND MAY NOT BE USED BY, OR DISCLOSED TO OTHERS WITHOUT THE PRIOR WRITTEN CONSENT OF MEMBRANA-CLT. THE INFORMATION CONTAINED HEREIN MAY NOT BE USED FOR ANY PURPOSE OTHER THAN THE EXPRESSED INTENT FOR WHICH IT WAS LENT. MEMBRANA-CHARLOTTE IS A DIVISION OF CELGARD,LLC

DRAWN BY RHC	10-14-08	APPROVED FOR CONSTRUCTION	SHEET NO 1 OF 1	DRAWING NUMBER	REVISION	ALL RIGHTS RESERVED
CHECKED BY		SUPERSEDES	SCALE	SMC-0104-12-2836	5	COPYRIGHT © 2012 MEMBRANA
APPROVED BY		SUPERSEDED BY	NONE			

REF MACHINE XX
 DRAWING TITLE 4 X 28 304L S.S. Housing 3/4" NPT PORTS