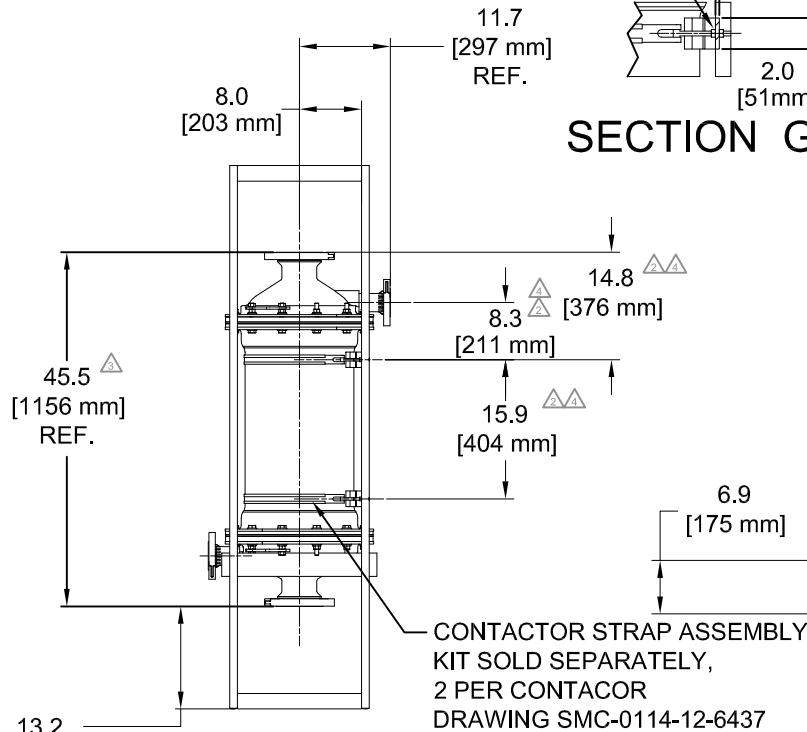


HEX NUTS PROVIDED WITH STRAP ASSEMBLY KIT
SEE DRAWING SMC-0114-12-6437

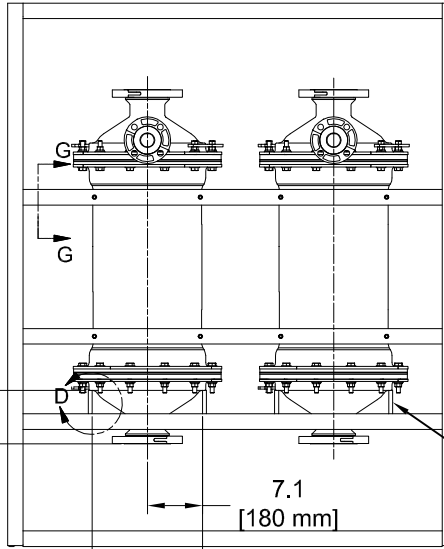
0.3 [8 mm] FLAT BAR BY CUSTOMER

LIFTING LUGS, TWO LOCATED TOP SIDE AND TWO BOTTOM SIDE FOR LIFTING CONTACTORS INTO POSITION TYPICAL

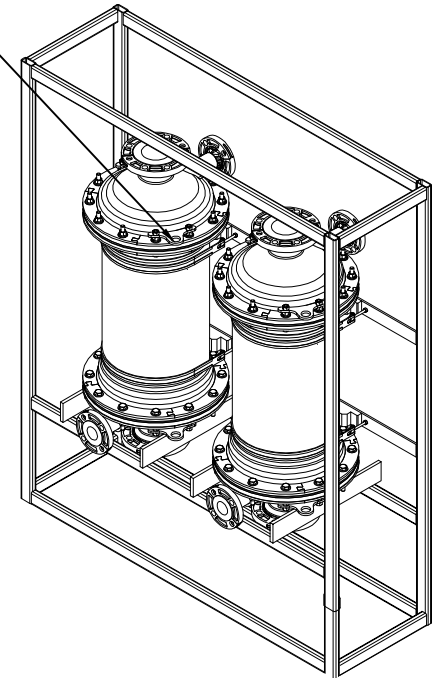
SECTION G-G



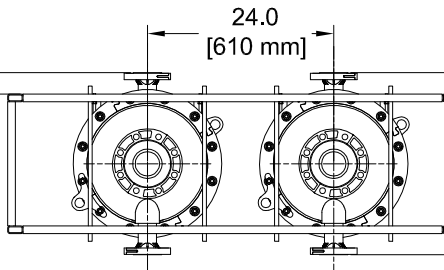
SIDE VIEW



FRONT VIEW



BASIC STRUCTURE, RECTANGULAR OR SQUARE TUBING, WELDED CONSTRUCTION BY CUSTOMER

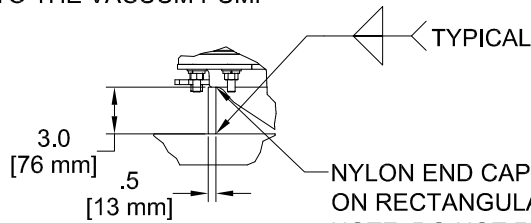


BOTTOM VIEW

13.2 [335 mm] MINIMUM FOR ELBOW TO FLOOR PROVIDE ADDITIONAL CLEARANCE TO ALLOW FOR SLOPE TO THE VACUUM PUMP

CONTACTOR STRAP ASSEMBLY KIT SOLD SEPARATELY, 2 PER CONTACTOR DRAWING SMC-0114-12-6437

BY CUSTOMER



DETAIL D

NYLON END CAP SHOULDER TO REST ON RECTANGULAR BARS, NOTE: DO NOT REST CONTACTOR ON END CAP BOLTING FLANGE

REV	DESCRIPTION	DRWN BY	CHKD BY	APVD BY	D R
1	ADDED DIMENSION	SDM			04-04
2	WAS 17.8, 7.4, 13.9, ADDED FORTH LIFTING LUG	EWB			07-06
3	WAS 45.8 REF., CORRECTED	EWB			03-08
4	METRIC CONVERSIONS	EWB			06-08

DIMENSIONAL TOLERANCES APPLY UNLESS OTHERWISE SPECIFIED	
DIMENSIONAL TOLERANCES-DIMENSIONS	DIMENSIONAL TOLERANCES-MILLIMETERS
1 DECIMAL PLACE ±.06	0 DECIMAL PLACES ±1.5
2 DECIMAL PLACES ±.02	1 DECIMAL PLACE ±.5
3 DECIMAL PLACES ±.008	2 DECIMAL PLACES ±.12

MEMBRANA Underlining Performance

DO NOT SCALE THIS DRAWING	THIRD ANGLE PROJECTION
DRWN BY: SDM	APPROVED FOR CONSTRUCTION
CHECKED BY	SHEET NO: 1 OF 1
APPROVED BY	SCALE
SUPERSEDED BY	DESCRIPTION: SMC-0114-12-6450
SUPERSEDED BY	MATERIAL
APPROVED BY	REVISION: 4
APPROVED BY	PLAN FILE NO
APPROVED BY	POCKET NO
APPROVED BY	FOLDER NO

REQD PART	DRAWING NUMBER	DESCRIPTION	MATERIAL	REMARKS

REF MACHINE

DRAWING TITLE 14 IN RECOMMENDED VERTICAL MOUNTING

PLOTTED: